

Total Clean System

Taking the lead with your Solids Control Needs!



Del Tank & Filtration Systems patented "TOTAL CLEAN SYSTEM" is used for the removal of solids from slurries that are common in the Dredging, Oil & Gas Drilling and Micro Tunneling industries. It has proven highly efficient in the dredging industry where high volumes of sand must be removed and dewatered. The Total Clean System has become a key component when customers are designing and/or performing large restoration projects in excess of 3000 gpm and has been used in Beneficial Reuse and Beach Restoration, Hog Waste Dewatering, Refinery Tank Cleaning and the removal of PCB Contaminated Sediments.

Phone:
+7(908) 613 22 20

THE TOTAL CLEAN SYSTEM

*United States Patent # 6,506,310

Most dredging projects require 3 to 4 stages of solids removal; Scalping (gravel, sticks, debris), desanding (+74 microns), fines removal (-74 microns) and water treatment (depending on discharge criteria set forth by local agencies). The TOTAL CLEAN SYSTEM was specifically designed for the first two stages because these stages typically do not change much from job to job. Although our hydrocyclones are capable of removing solids down to 35 microns, the nature and make-up of these solids may not allow for the hydrocyclones to effectively remove and dewater them.

The Total Clean System's unique patented design incorporates a v-shaped tank, a tilted plate baffle system, and a shaftless screw to create a clarifier. Instead of attempting to suspend the solids with the use of jets and agitators, the TOTAL CLEAN lets nature take its course and allows the solids to settle to the bottom of the v-tank portion of the unit. The settling is enhanced by the tilted plate baffle system, which the slurry must pass through as it flows through the v-tank. The shaftless screw steadily moves the settled solids to the suction of the hydrocyclone feed pump. The heavy sands and silts are removed by the hydrocyclones and then dewatered over a linear motion shaker. In most cases, the hydrocyclone/shaker units and pumps are sized so that the cleaning rate is 2-3 times that of the flow rate through the system. This redundancy allows for maximum solids removal from the sludge or dredged slurry.

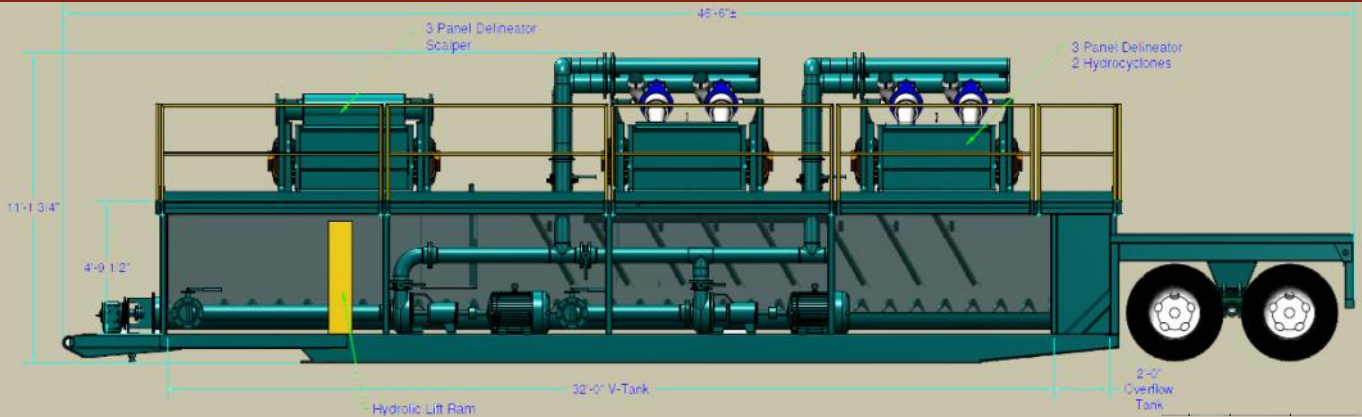
Advantages

- The Total Clean can be used in conjunction with other dewatering methods such as geotubes, filter presses, belt presses, centrifuges, sand filters, etc, in order to produce a "drinking water" clear effluent if necessary.
- Solids removed are dry enough to pass paint filter test and haul off immediately.
- Sizing of material can be accomplished in order to recover or recycle valuable resources.
- Can handle flow rates that other dewatering methods cannot.
- Cost less than geotubes and Polymers in most cases.
- No Polymers needed.
- Very mobile, can be setup in a matter of hours.
- Only requires one operator.
- Very small foot print required.
- Extremely quiet operation, suitable for sensitive residential areas.
- Recover material as fine as 37 Microns in some cases.
- Typically we see 75-85% dry solids discharge.
-

Uses: Sand and Silt, Coal, Carbon Fines, Coke Fines, Cat Fines, Fly Ash, Bottom Ash, Hog Waste and more!

Our TCW-3000 Unit has been used for Beach Restoration, Pond Cleaning, Lake Dredging, Sand Washing, PCB Contaminated Sediments, Coal Fines Recovery, and many more.

TCW-750 and TCS-750



Power Requirements

3 Phase 480 V, 60 Hz
125 Full Load amps

Operating Dimensions: 46'-6" L X 8'-6" W X 11'-2" H

Transportation: (1) Legal Load with 3 Panel Shakers

Setup Time: (1-2) Hours, No Crane Needed

Operators Needed: (1)

Equipped with Hydraulic Lift Ram for
easy loading and unloading

Power Requirements

3 Phase 480 V, 60 Hz
125 Full Load amps

Operating Dimensions: 14'-10" W X 25' L X 11'-2" H

Transportation: (1) Truckload with 3 Panel Shakers

Setup Time: (1-2) Hours, can stay on drop deck trailer

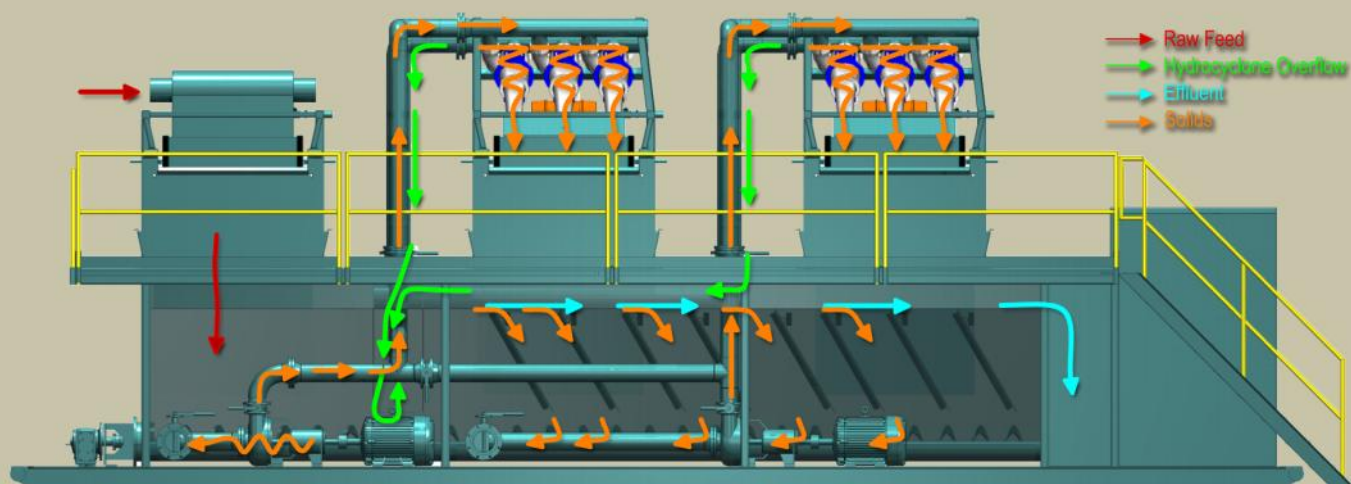
Operators Needed: (1)



The TCS-750 system rated capacity up to
750 gpm of a sand slurry



Rated capacity up to 1,500 gpm of a sand slurry



Power Requirements

3 Phase 480 V, 60 Hz
250 Full Load amps

Lifting Weight for unloading

Tank—25,000 lbs
Shakers—5,000 lbs each

Operating Dimensions: 15'-9"W X 39' L

Transportation: (1 or 2) Truckloads, 3 Panel Shakers is one load 4 Panel Shakers is two loads.

Setup Time: 2-3 Hours

Operators Needed: (1)

TCW-1500



Power Requirements

3 Phase 480 V, 60 Hz

255 Full Load amps

Operating Dimensions: 14'-5" W X 52' L X 11'6" H

Transportation: (1) Permit Load, No Crane Required

Setup Time: 1 Hour

Operators Needed: (1)

Equipped with a 9" Auger System for Solids Discharge

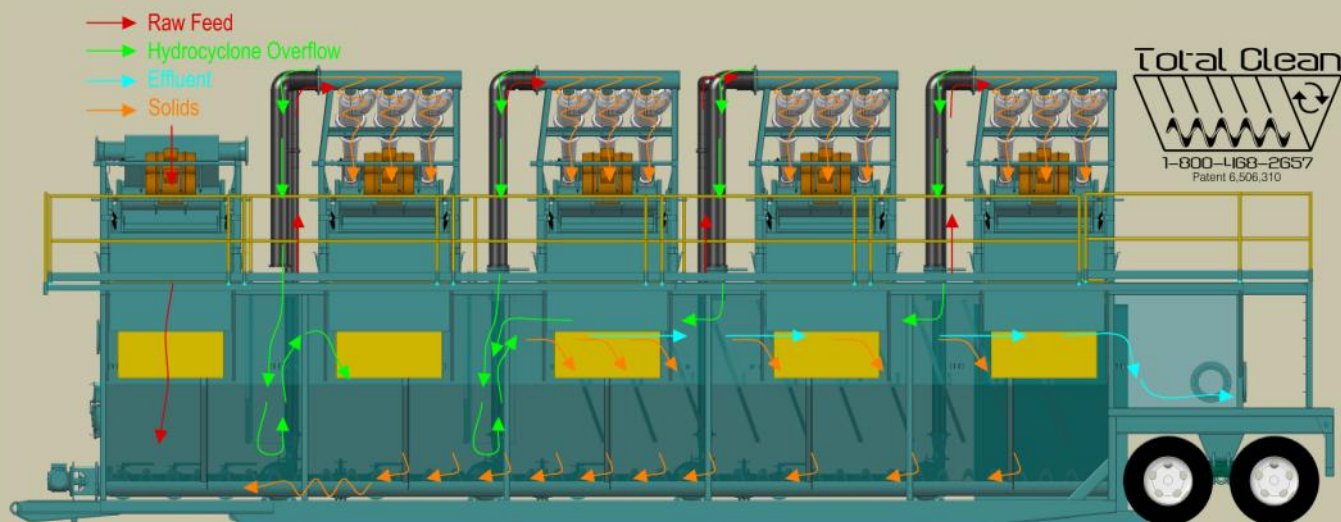




**OUT PERFORM YOUR COMPETITORS
WITH THE TOTAL CLEAN SYSTEM!**



Rated capacity up to 3,000 gpm of a sand slurry



Power Requirements

3 Phase 480 V, 60 Hz

400 Full Load amps

Lifting Weight for unloading

Tank—26,000lbs

Pump Skid—22,000 lbs

Shakers—5,000 lbs each

Operating Dimensions: 25' W X 52' L

Transportation: (3) Truckloads

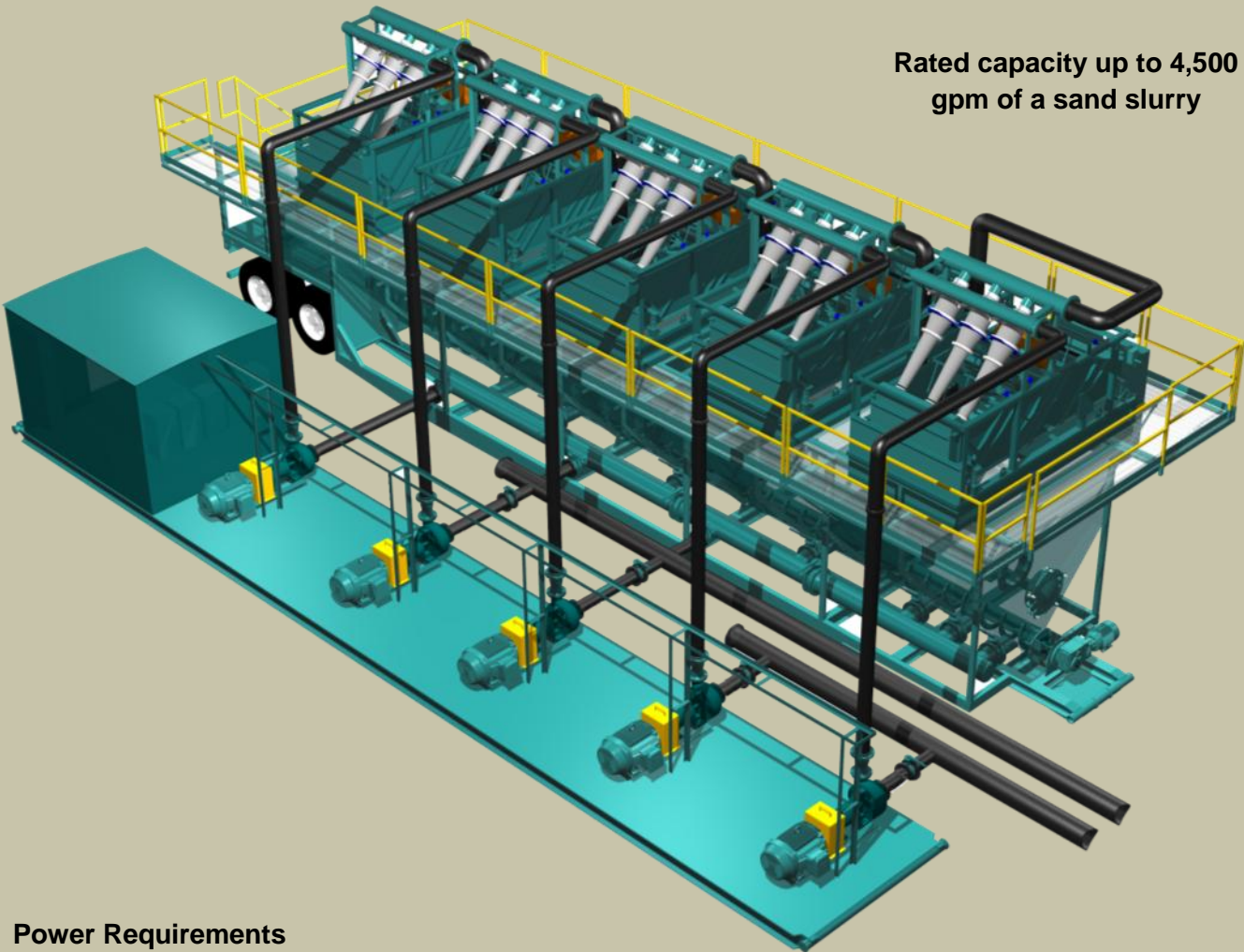
Setup Time: (1) Day with good crane operator

Operators Needed: (1)

TOTAL CLEAN 3000 PLUS



Rated capacity up to 4,500
gpm of a sand slurry



Power Requirements

3 Phase 480 V, 60 Hz
560 Full Load amps

Lifting Weight for unloading

Tank—26,000lbs
Pump Skid—30,000 lbs
Shakers—5,000 lbs each

Operating Dimensions: 52' W X 73' L, or 52' W X 100' L

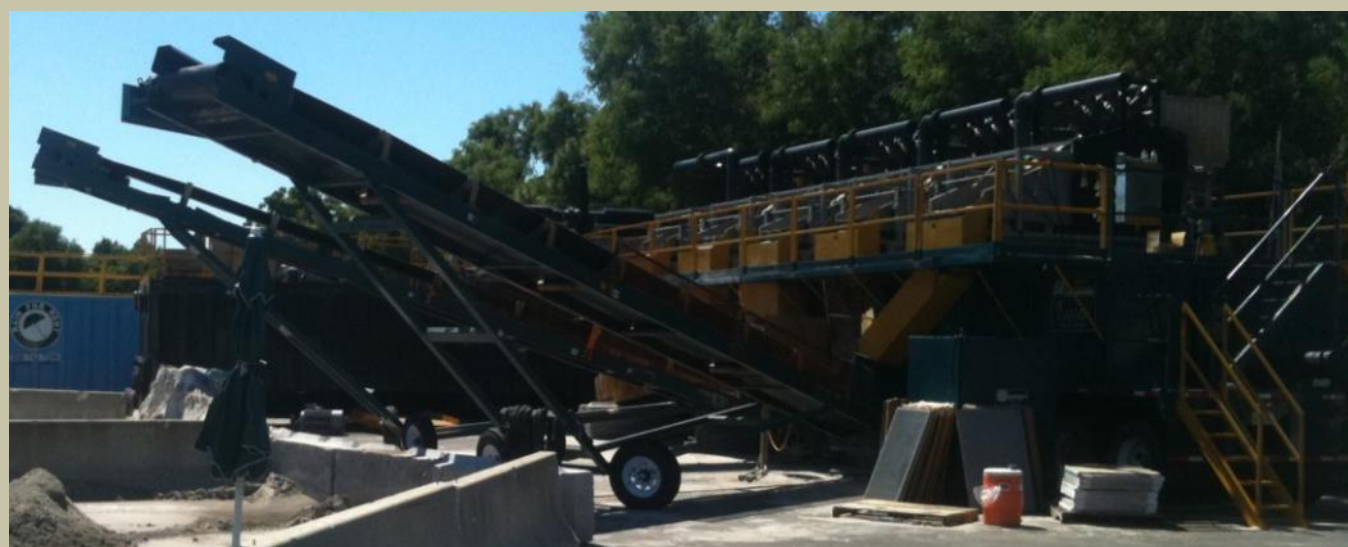
Transportation: (5) Truckloads

Setup Time: (1) Day with good crane operator

Operators Needed: (1)

TCW-3000 and TCW-3000 Plus





SCALPING SYSTEM



www.saprex.ru
www.sapropex.ru
Email: danil@astranet.ru



The TOTAL CLEAN SYSTEM can be configured to meet your projects specific needs. Please call DEL TANK & FILTRATION SYSTEMS @ 800-GO TANKS and speak with one of our customer representatives for more detailed information about the TOTAL CLEAN SYSTEM and how it can work for you.

. 414018. . 67
. +7 (85120 73 22 20